



# Science Behind the Beauty

---



# Index

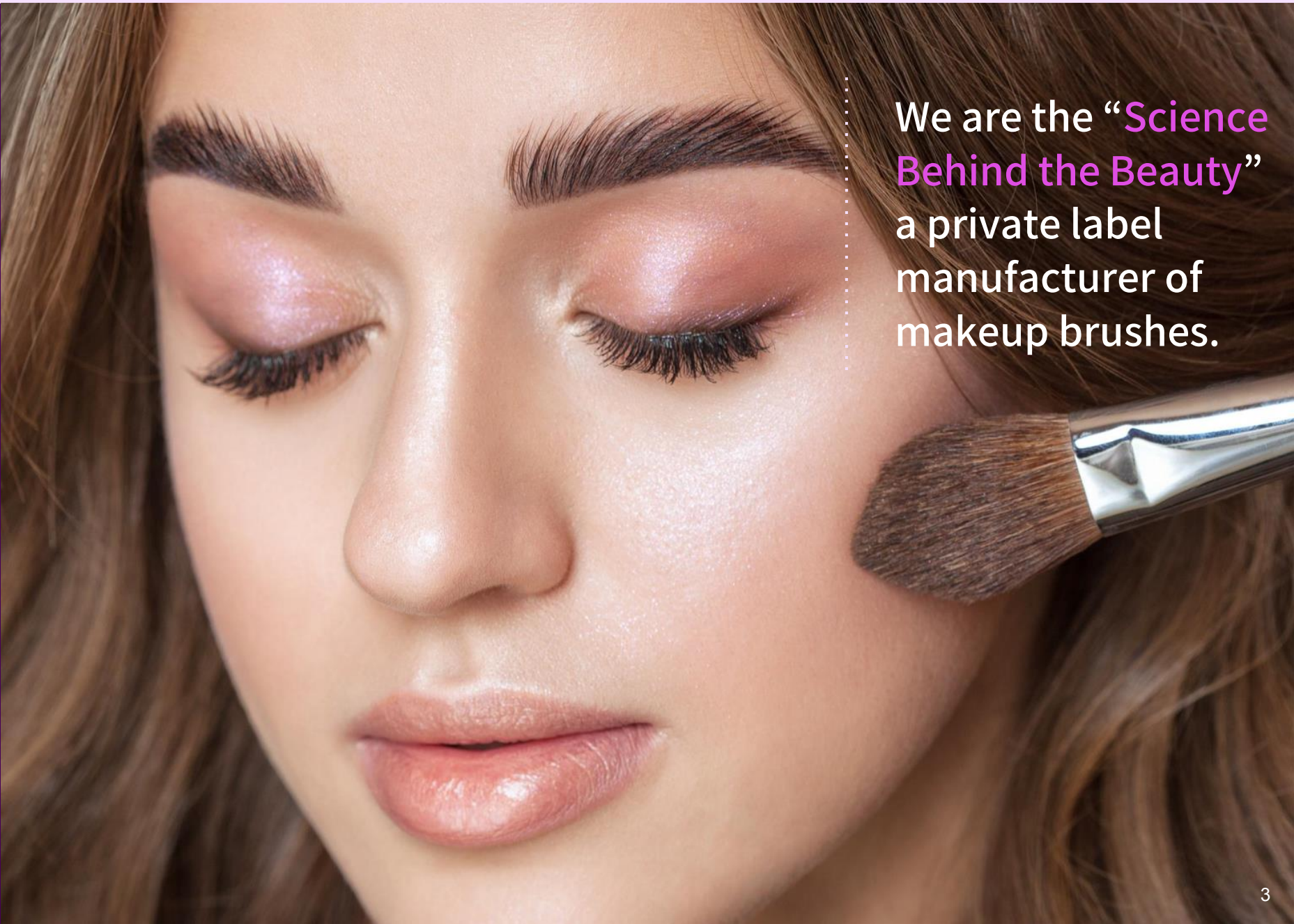
- 
- Who We Are
  - Why BeauteTools
  - Appendix





# Mission

TO ADVANCE  
PRODUCT SOLUTIONS OF  
BEAUTETOOLS WORLDWIDE



We are the “**Science Behind the Beauty**”  
a private label  
manufacturer of  
makeup brushes.

# Quick Facts

## PRODUCTS

- Makeup Brushes

## OPERATIONS

- Dallas Texas (U.S. HQ)
- Cangzhou China (Factory)

## TEAM AND CAPACITY

- 150 People.
- 24 Million units per year

## CERTIFICATES

- ISO 9001
- ISO 14001
- ISO 45001
- ISO 22716

## MAIN MARKETS

- U.S., China





# Why BeauteTools

## FACTORY DIRECT

- Saving you cost and increasing your profit margins by manufacturing in China
- Saving you time and bringing you maximum efficiency through a U.S. office location





# Why BeauteTools

## PROVEN SUCCESS

We are partner with well-known brands, with products sold in major retailers and e-tailers.



bloomingdale's



NORDSTROM



SEPHORA



# Why BeauteTools

## QUALITY MANAGEMENT

- ISO 9001 Certified
- Average 15 years of skillful craftsman experience for workers
- Average 20 years of management experience for senior directors
- 32 steps of manufacturing process

Occupational Health & Safety  
Management System



Environmental  
Management System



Responsible Forestry  
Management (FSC)



ISO 22716  
Cosmetics GMP



Quality Management  
System



SMETA Ethical  
Trade Audit



# Why BeauteTools

## SUSTAINABLE & INNOVATIVE

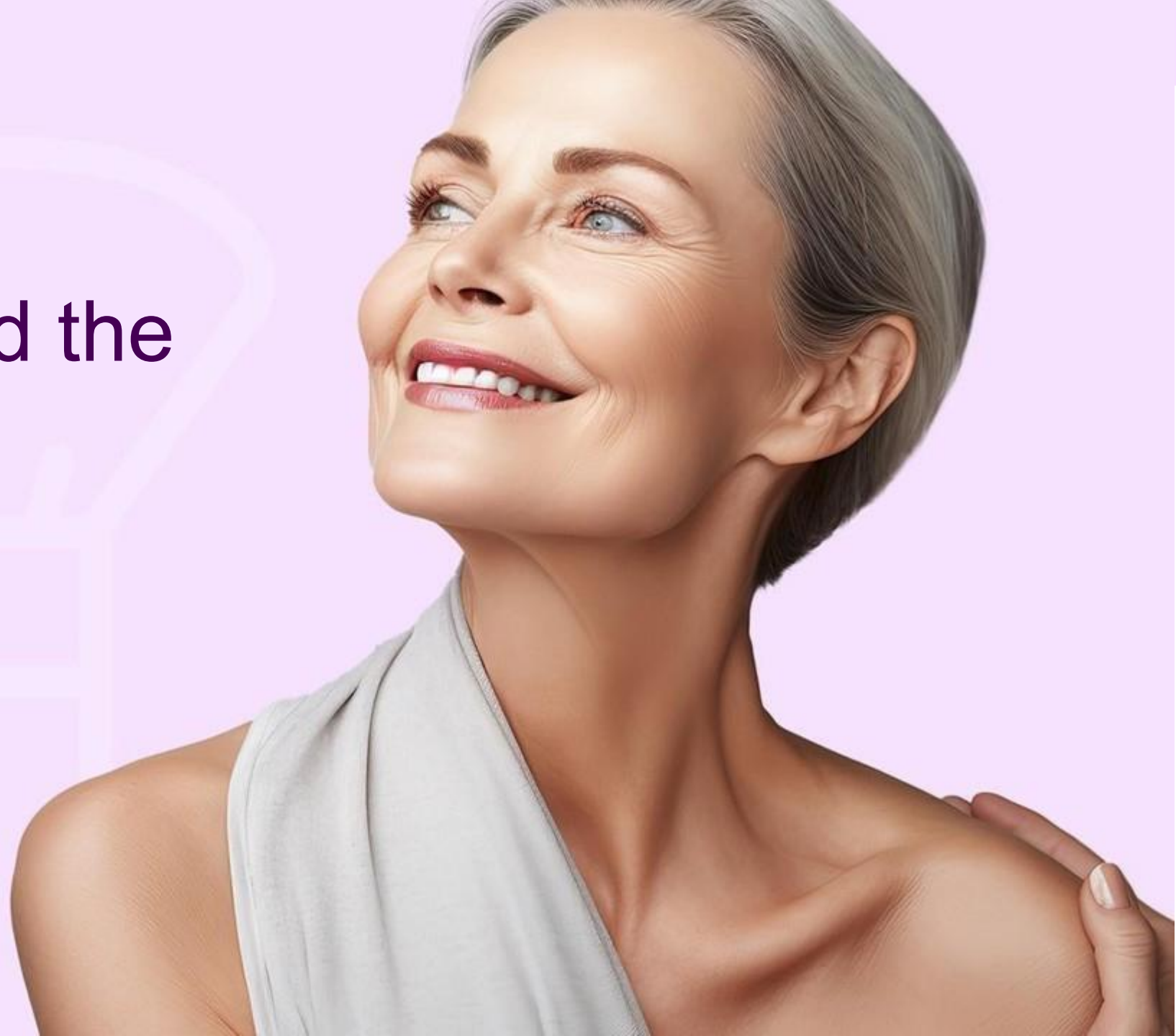
- Use sustainable materials
- Launch new products quarterly



\* Compostable: for bristle & handle material



# Science Behind the Beauty



# Appendix

- BASE PRODUCTS
- PRIVATE LABEL CAPACITY
- PRIVATE LABEL PROCESS





# BASE PRODUCTS

## Mermaid

01-1029

### FEATURES:

- ✓ Curved shape – Fits facial contours
- ✓ Thin bristles – Fast & even application
- ✓ Spatula design – Scoops and blends easily

### SUGGESTED CATEGORY:

Foundation/Mask



MOQ: 3,000 PCS

# TwinGlow

01-1015

## FEATURES:

- ✓ Angled flat-top – Even, streak-free finish
- ✓ Dense bristles – Quick, no product waste
- ✓ Soft fibers – Skin-friendly, easy to use

## SUGGESTED CATEGORY:

Foundation/Mask

[PRODUCT VIDEO](#)



MOQ: 1,000 PCS



# Chisel Buff

01-1027

## FEATURES:

- ✓ Versatile – Works with all base types
- ✓ Dense bristles – Fast, streak-free finish
- ✓ Dual-angled head – Precise application

## SUGGESTED CATEGORY:

Foundation

[PRODUCT VIDEO](#)



MOQ: 1,000 PCS

# Midnight Plum

01-1008

## FEATURES:

- ✓ Ergonomic, non-slip handle – Secure grip
- ✓ Dense bristles – Flawless, streak-free finish

## SUGGESTED CATEGORY:

Foundation

[PRODUCT VIDEO](#)



MOQ: 5,000 PCS



# Winter Whisper

00-1025

## FEATURES:

✓ Multi-Tech Handle Finish

## SUGGESTED CATEGORY:

Powder

[PRODUCT VIDEO](#)



MOQ: 10,000 PCS

# Blossom Sky

02-1087

FEATURE:

✓ Unique Petal-Shaped Head

SUGGESTED CATEGORY:

Powder

[PRODUCT VIDEO](#)



MOQ: 3,000 PCS



# Radiant Veil

01-1034

## FEATURES:

- ✓ Dense bristles – Fast, even application
- ✓ Angled flat-top – Picks up product evenly
- ✓ Tapered edge – Fits facial contours
- ✓ Soft bristle– Gentle on skin

## SUGGESTED CATEGORY:

Foundation



MOQ: 2,000 PCS

# Pro Buff No.55

01-1026

## FEATURES:

- ✓ Dense bristles – Fast, streak-free application
- ✓ Compact design – Portable and easy to use

## SUGGESTED CATEGORY:

Foundation

[PRODUCT VIDEO](#)



MOQ: 2,000 PCS

# Cute Doll

10-1076

## FEATURES:

- ✓ Ultra-fine tip – Precise one-stroke application
- ✓ Soft, smooth bristles – Gentle on skin

- ✓ Multi-functional

## SUGGESTED CATEGORY:

Eyeliner/Eye Detail

[PRODUCT VIDEO](#)



MOQ: 1,000 PCS



# Sakura Whisper

13-1023

FEATURE:

✓ Multi-Functional

SUGGESTED CATEGORY:

Concealer/Lip/Eye Detail



MOQ: 2,000 PCS

# GlowKit 9

00-1143

## FEATURES:

- ✓ Compact & Portable – Use anywhere
- ✓ All-in-one design – Versatile functionality
- ✓ Clean, organized - tidy



MOQ: 5,000 SETS

# Whimsical 3-in-1

15-1003

## FEATURES:

- ✓ Portable
- ✓ Compact
- ✓ Nestable
- ✓ Dual-ended
- ✓ Versatile

## PRODUCT VIDEO



MOQ: 3,000 SETS



# Autumn Porcelain Duo

00-1105

## FEATURES:

- ✓ Dual-ended brush – 2 in 1
- ✓ Compact design – Easy to carry

[PRODUCT VIDEO](#)



MOQ: 1,000 SETS

# Luminous wind

00-1004

## FEATURES:

- ✓ Multi-functional – Wide variety
- ✓ Compostable PLA bristles – Soft and skin-friendly
- ✓ Matte anti-slip handle – Simple and stylish



MOQ: 3,000 SETS

# NeoClear

00-1121

## FEATURES:

- ✓ Crystal handle
- ✓ Scratch-resistant Ferrule

[PRODUCT VIDEO](#)



MOQ: 2,000 SETS



# Dream Elf 9

00-1121

## FEATURES:

- ✓ Soft-touch Coated Handle
- ✓ Mix & Match Colors

## PRODUCT VIDEO



MOQ: 2,000 PCS  
EXW CHINA

# Satin Bloom

00-1103-1

## FEATURES:

- ✓ Soft-touch Coated Handle
- ✓ Full-shape set

[PRODUCT VIDEO](#)



MOQ: 2,000 SETS

# Black Tube

00-1033-1

## FEATURES:

- ✓ Beginner-friendly
- ✓ Versatile Brush Shapes

[PRODUCT VIDEO](#)



MOQ: 1,000 SETS

Explore more  
designs



### [Brush set](#)

### [Single brush](#)

[01 Foundation](#)

[02 Powder](#)

[03 Bronzer](#)

[04 Blush](#)

[05 Highlight](#)

[06 Contour](#)

[07 Crease](#)

[08 Concealer](#)

[09 Eyeshadow](#)

[10 Eyeliner](#)

[11 Eyebrow](#)

[12 Eyelash](#)

[13 Lip](#)



# PRIVATE LABEL CAPACITY

- Customized based on 200+ existing models.
- Exclusive development



# PRIVATE LABEL PROCESS

## THE BEAUTETOOLS PROCESS

BEAUTETOOLS GUIDES BEAUTY BRANDS THROUGH THE STAGES OF  
CREATING PRIVATE LABEL MAKEUP BRUSHES

